

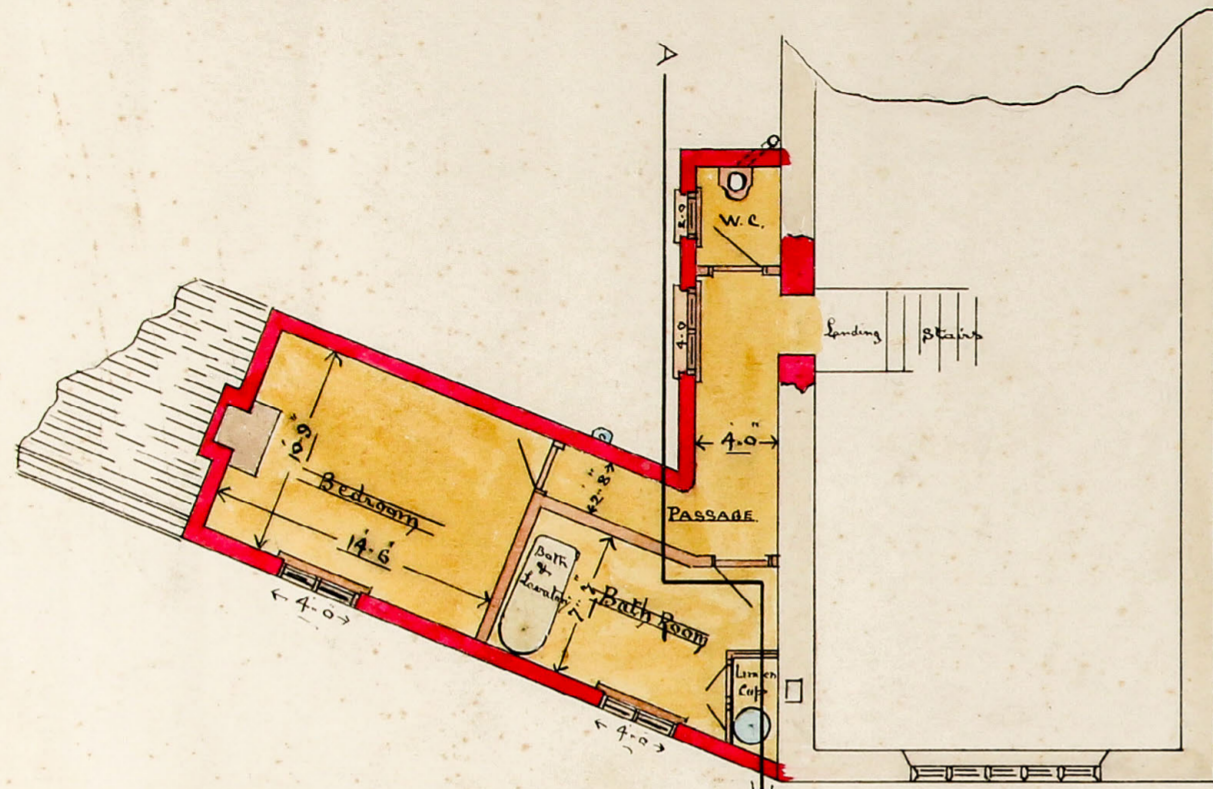
Proposed Alterations & Additions, at the Grammar School

Colyton

Scale 8 Feet One Inch

EDUCATION
SC 4738

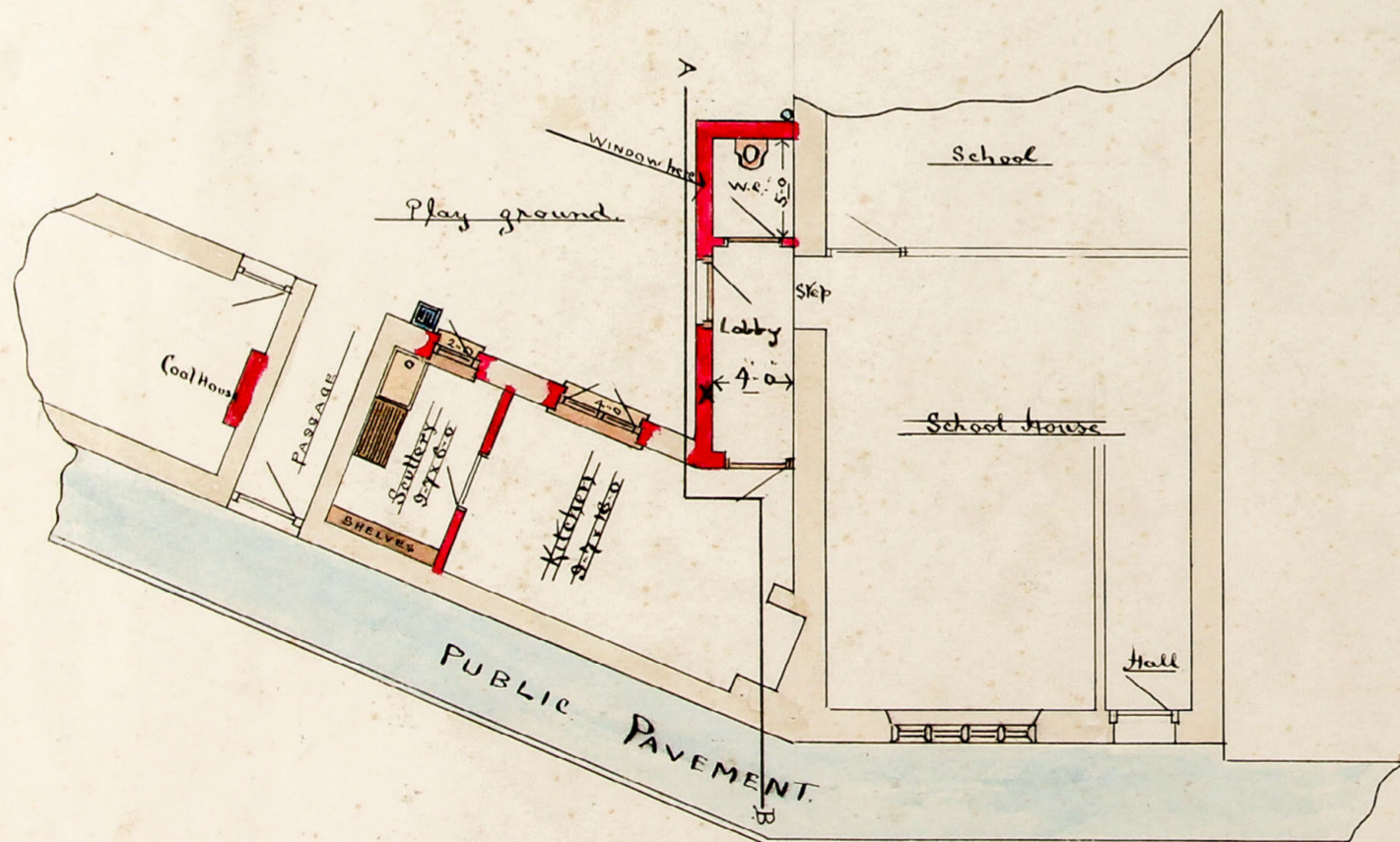
24 JUL 1910



BEDROOM PLAN



ELEVATION & SECTION A.C.B.



GROUND PLAN

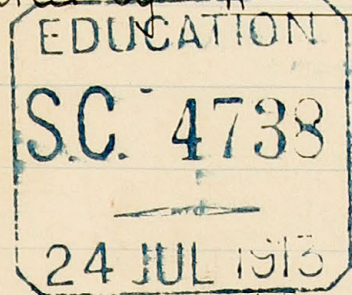


FRONT ELEVATION

W.A. Richards
Colyton
June 1910

Specification of Work proposed to be done, in

Alterations and Additions at the Grammar School
Colyton, Devon. for the Colyton Feoffees, and in
accordance with Plans &c. prepared by Wm. F. Richards
of Colyton.



Take down.

Carefully take down the Roof over present Kitchen, and
over Passage, and also over W.C. & Roby. and clear, and
cart away.

Take down wall, to part of Front Kitchen, as low as sills
for New Window openings as shown on Ground Plan. also
take down the present external $\frac{1}{2}$ " inch brick walls to W.C. and
Roby, and clean and stack all Brick and Stone aside for reuse

Masons Work.

Dig Trench 5 ft long, 15" inches wide, and 1 ft 9 in
deep, in Coal House, for Base of Chimney, and dig Trench 15" inches
wide, 1 ft 6 in deep, for New Wall to W.C. and Roby. and
carefully take up floor in Kitchen, where the New Partition
is shown on Ground Plan, and dig Trench 9" inches wide
12" inches deep.

Put in all Trenches. Concrete 9" inches deep, and the
full width of Trench, composed of One of blue Lias lime, to Three of
fine Shingles or broken bricks.

Build the Front Wall to Kitchen from bottom of Sills
of Windows, up to the tops of floor joists. the same thickness
as the present Wall, and form the two Window openings
with reals, and lump brick Arches over same.

Build a $\frac{1}{2}$ " inch brick partition in Kitchen, to form a

Sculley, and form doorway in same as shown, and continue up to bottom of joist

Build a solid brick projection 4ft wide, 9ins thick, in Coal House, and well tie and bond in to existing wall, and continue up to top of joist.

Build 9ins brick walls, from top of concrete up to roof, and form all Door and Window openings in same as shown, to W.C. and Lobby and Passage & Etc.

Build walls of Bedroom, Bathroom, and Passage, with 9inch brick work, and continue up to roof as shown, and form two window openings, where marked on Bedroom Plan, and form fireplace and carry up plus 9" x 9" and well parge same with mortar and Cow droppings well mixed together. Build stack above roof and fit with grey pot as shown.

Take out present window to Landing, and form opening from floor of Landing up under Rintel, and build up quoins on each side as shown, for access to New Additions.

Turn rough brick timber arch to form hearth to fire place in bedroom, and lay on same, 1inch cement and finish smooth level with floor.

Floors. Repair and make good to floors of Kitchen, Scullery, Lobby, and W.C., where required with 1inch cement.

Skirting - Run cement skirting 6inches deep, 1/2 inch projection beyond plastering, to walls, and partitions, of Kitchen, Scullery, Parlor, and W.C.

Sink. Take out the present pump and Frough in Kitchen, also all the lead pipes leading from pump to tank over W.C. and clear away, including tank and

(2)

covering 7 etc. connected to same.

Build two 4 1/2 inch brick piers, the necessary with and height for new sink, and fix a new fireclay sink. (The Belfast) size 33 inches by 18 inches by 10 inches deep outside measurements and to be special quality P.B. 2 3/4. and fit with plug and waste pipe, and to empty on gully trap outside wall where shown on Ground Plan.

Fix 1 1/2 inch Chestnut grooved draining board 3 ft long 16 inches wide on strong bracket.

Slater.

Cover the roof with 9" x 18" best old Vain Oakley Slates, laid to a 4" inch overlap, and each slate nailed with two of 1 1/2 inch galvanized iron slate nails

Cover the Ridges with glazed roll black ridge tiles, set and pointed in cement mortar.

Plastering

Rath, plaster, float, and set, the whole of the ceilings and wood partitions, and render float and set, the whole of the new walls and brick partition inside, and repair and make good to plastering to old walls where disturbed through alterations. The whole to be finished with a smooth surface.

Cement Stucco.

The whole of the external face of walls to the altered part, and new part, to have the joints well raked out and cleaned down, and afterwards to be plastered in three coat work, with cement and water sand finished to correspond as near as practicable with the plaster to front of School House. Form Plinth facing road as shown on front Elevation and form a band as shown on yard side

Fix String Courses, and Hoods, of Beer Stone, to front Elevation facing road to match as near as practicable with the existing moulds to front of School House.

Best Stone Windows

Fit the two window openings to Bedroom and Bathroom as shown in front elevation with Beer Stone Jambs, Heads, Sills, and Mullions, all worked and rabbeted etc. to correspond with the existing stone window frames in front.

Fit the ~~heads~~ openings with wrought steel casements and frames hinged to open out. and fitted with strong fastener and screw down stay.

Form Sills where wood window frames are. with cement, with 2 inch projection etc. to detail, and form Hood over the Heads.

Drains.

Dig trenches for and lay 4 inch glazed socketed stoneware drain pipes, from Scullery sink, and down pipe, from Bath waste, on to, and connect to main drain in Play Ground, and ^{one of 6 x 6 x 4. Gully Trap to take water from Bath & Eaves of Roof. and} fix one of 9 x 9 x 4 stoneware grease trap to take waste from Scullery and fit each gully with iron grid.

Fix Plates & etc.

Fix in Complete, Plate in Bedroom, and Range in Kitchen and cut away for and attend on all other trades

Carpenter & Joiner & c.

Floor and Joists.

Fix 9" x 2" joists over Kitchen, Scullery, Passage, Lobby & W. C. and 9" x 2 1/2" Timbers and mortice and tenon and notch Timbers together for fireplace, and where necessary, fix joists on 4" x 3" plates and well spike same, and put one row of herring bone bridging 2" x 1 1/2" over Kitchen, + Scullery, + Passage, + Lobby, and spike to joists and through centre.

Lay on joists 7" x 1" best red well seasoned wrought,

(A)

boards, nailed at each edge to every joist, and the joints afterwards to be cleaned and planed over.

Partitions

Form wood partitions as shown on Bedroom Plan with 4" x 3" Heads, Sills and Doorposts, and 4" x 2" braces and filling in studs, all to be framed morticed and tenoned together

Skirting

Fix 7" x 3/4" moulded skirting to all walls and partitions where wood floors, and continue as far as old landing.

Roof & Ceiling Joists.

Form roof as shown with 7" x 2" plates, spiked on 4" x 2" ceiling joist, fixed to 4" x 3" plates, 4" x 2" Rafters + Collars, 8" x 1 1/2" Ridge, 2" x 3/4" Battens, 9" x 3/4" Walley boards, 7" x 1" Beaded Facia board and Pable boards, and 3/4" soffit boards to Pables. The facia board to fit close against stucco. The whole to be well notched and halvened and spiked together

Form manhole in ceiling of Bath Room 2'-0" x 3'-0" in clear + fit with 1" inch linings, and 1" inch hinged door, and 2" x 3/4" Architraves.

Fix two of 6' x 3' joists to carry cistern, and lay 1" inch board under cistern, and cover with thick felt. Fit cistern with 3/4" inch wood cover.

Doors + etc.

Fit doorways to kitchen, Scullery, Bedroom, Bathroom, and Upstair. W.C. with 1 1/2" inch framed four paneled doors, moulded on one side, and hung with 3/2" inch iron butt hinges to 1 1/2" Rebated jamb linings, and fitted with 6" inch iron Run Rocks, and strong reeded brass handles, P.C. 3/6 each

Fix 3' x 1" moulded Architraves, on each side of doorway

Allow the sum of Five Pounds for forming Linon Cupboard in Bathroom, with framing, and 4 doors, and moveable shelves

(5)

72/3

the full height of Room, is Detail.

Windows.

Fit window openings of kitchen, Scullery, Landing, and both W.C.'s with $3\frac{1}{2} \times 3$ rebated and moulded frames, Heads, Mullions and Transoms. and $3\frac{1}{2} \times 3$ rebated and weathered and grooved sills. all mortised and tenoned together. the outsides of frames & Heads to be grooved for stucco, &c. These frames with $1\frac{3}{4}$ inch rebated and moulded casements, and those to open to be hung with 3 inch Iron butt hinges, and fitted with strong malleable Iron fasteners, and screw down stays, at 2/- per set. Four Casements to be hung at the side, and six at the top to open out.

Fit all windows with 1 inch rounded nosed window boards, to project $1\frac{1}{4}$ inch beyond plastering and to run on 2 inches at each end

Fix Stay Beads to all Quoins where necessary.

Shelves

Fix four shelves 11×1 on strong framed 3×1 brackets in Scullery where shown

Fix if necessary the present window again in wall of Lobby where marked x

Materials to be used for Mason's and Carpenter's Work.

Mortar for walling and brickwork to be composed of 1 of Polus ground blue lias lime, to $2\frac{1}{2}$ of Colyton Hill sand, well mixed together

Mortar for Plastering internally to be composed of the best white ^{lime} chalk, boiled and strained through a fine sieve. and mixed with Colyton Hill sand and good long cow hair, the finishing coat to be Wilmington sand and lime putty.

Cement Mortar to be composed of 1 of best Rym. Requirement to 2 of clean washed and sieved water sand, well mixed together

(b)

The Cement to be ~~Ex~~posed to the air 24 Hours. before being used and turned over frequently

— Bricks to be No 3 Pennock bricks —

The whole of the Timber to be the best of their respective kinds, that for Carpenters work to be best Swedish red deal, and for Joiners work to be best Archangel deal Red.

— Plumbers and Ironmongers Work: —

Fix 4 1/2 inch O.G. cast iron eaves guttering to all eaves secured with strong purpose made iron brackets. Securely fixed to the Face board, and with all necessary stop ends, outlets &c. and fix two stacks of 2 1/2" rain water pipe to take eaves water down, and empty into Cistern Head on yard side. and down and carried under the pavement to empty on open gutter outside pavement. on the front side of Building, with all necessary Swan Necks, Bends, &c.

Fix 3 inch rain water pipe, and cistern head, and shoe. to yard side of Building to take water from Bath, + Rain Water &c. and empty on Pully Trap.

Take down and refix Soil + Vent pipe, where shown, and fit with a branch arm and connect with new W.C. as shown on Bedroom Plan.

Fit the Bedroom Fire Place, with iron mantle Register. Price P.C. 25/-

Take out the present old grate in kitchen and fix in the opening, complete, a new 48 inch Russells Patent, Herald Range No G 246 with oven and sham P.C. £18.0.0 exclusive of carriage + fixing, and a special wrought iron high pressure back boiler P.C. 42/-

Fix in Bath Room, Russells Combined Bath and Lavatory Basin No G 1683, P.C. complete £7.15.0 and fit with lead waste to empty into Cistern Head outside as shown.

(7)

Fit up stair W.C. with Pedestal Closet "The Belmont" all white at P.C. 15/6
Mahogany seat at P.C. 7/- and Noiseless Two gallon flushing Cistern
P.C. 15/- including Chain and Pull.

Connect same to pan with 1 1/2" inch stout lead flush pipe
with all necessary brass unions & joints & etc complete. also
properly connect W.C. pan to the branch arm of soil pipe and
leave all complete.

Also overhaul the W.C. arrangement on Ground Floor and
leave in proper working order.

Hot Water Service

Provide and fix in roof over Bath Room a 100 gallon
galvanized iron cold water Cistern. 4'-0" x 2'-0" x 2'-0". No 14 gauge
and fit with wood cover as before specified. Lay on water
from the Main, on to Cold Water Cistern in Roof, with stout
1/2" lead pipe and provide a 3/4" lead tell tale pipe, from Cistern
on to and discharge in the open. and fit cistern with
Copper Ball Valve.

Provide and fix in Linen Cupboard, a 30 Gallon
galvanized iron Hot Water Circulating Egg Cylinder & plate with
all proper connections for pipes & etc, and with bolted manhole
Cover in side P.C. 30/-.

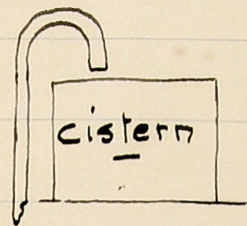
Lay on water from Cistern to Cylinder with 1" inch stout
lead pipes, weighing 12 lbs per fd, and fix a clear way
stop cock close to cistern.

Lay on Hot Water supply in 1" lead pipes 14 lbs to the yard, from
Cylinder to Boiler, both flow and return, with proper wiped
joints and unions etc complete.

Provide Boiler with a safety Valve, and fix same
where it can be easily inspected.

Carry up from crown of Cylinder 1" lead pipe, 12 lbs to the yard, to.

Cistern, and the top to turn down over Cistern.



Run on Hot Water from Cylinder, with 1 inch lead pipe as before specified, on to Bath, and Lavatory Basin, and Scullery Sink, and fix a Brass high. pressure screw down $\frac{1}{2}$ inch bibcock over Scullery Sink.

Run on cold water supply from Cistern on to Bath and Lavatory and Scullery Sink and Cisterns in W.C. with $\frac{1}{2}$ inch stout lead pipe and fix Brass screw down Bib Cock, over Scullery Sink. Fix a draw off tap where directed in Kitchen for the purpose of emptying Cylinder + pipes + etc. also fix a stop cock where directed.

Note the whole of this Hot Water supply to be carried out in a thorough and satisfactory manner, and to be tested and kept in a perfect working order.

Leadwork.

Put 4 lbs to the foot lead soakers around chimney, and where ^{Roof} abutts against wall + fix, slabs to the foot, Lead flashing and apron pieces. The whole to be neatly cut and dressed in joints and afterwards pointed in with cement.

Glazier and Painter, &c.

Glaze all the windows with 2103. sheet glass. well bedded in and puttied except the under Casements of W.C. which is to be Muranese glass. The iron casements to Bedroom and Bath Room, to be fitted with stout leaded lights, same pattern as existing lights to front of School House.

Knot, stop, Prepare and Paint, in 4 coat work an approved tint or.

(9)

lints, the whole of the new woodwork usually painted, also any old woodwork which may require painting, to the altered portion of the Premises.

Also paint shutters, Rain Water Pipes, and soil pipe coats

The Whole of the old Materials is to become the property of the Contractor, and in tendering for the work. He is to allow for same in the amount of his tender.

Notes. Should there be any item shown on the Plans and not clearly mentioned in this Specification or should there be anything specified in this Specification and not shown on the Plans it is to be clearly understood that the same shall be done so as to complete the work to the true meaning of both. (The Plans + Specifications) and the whole of the work to be completed to the satisfaction of the Engineer on or before the Day of.

Wm. A. Richards
6th June 1883